

TRUTH INDIA HOUSING PVT. LTD.

Delhi. Office:- 417, Suneja Tower-II, District Center, Janak Puri, New Delhi - 110058
Landline:- 011-41006630, **Mobile:-** 9212557744
Email:- enquiry@truthindiagroup.com
Website:- www.truthindiagroup.com

Site. Office:- KHUSH KHERA Industrial Area R-11 Near RIICO Chowk Bhiwadi Rajasthan.



TRUTH ELA RESIDENCY

ELEVATION VIEW



THE TRUTH ELA RESIDENCY

Presenting TRUTH ELA RESIDENCY, a 1/2 BHK bedroom residential enclave in BHIWADI. Nestled in a serene environment overlooking low high-rises building. Available in varied sizes, the apartments in Truth Ela Residency are thoughtfully designed to ensure it most comfort to the residents. Every factor ranging from convenience to luxury is considered in this project. The project surpasses innovation and modern architecture with technic and Strategic layout. These project customers too own their dream home at affordable prices following the belief that your dream are priceless.

Truth Ela Residency is situated right on the, RIICO Industrial Area, Khushkhhera, Bhiwadi. Offering you a great atmosphere so go ahead, give your life the attention it deserves.



BIRD EYE VIEW



THE GROUP

Truth India Housing Pvt. Ltd. speaks truth, believe in truth and work on truth, to enable every Indian own a dream house, comprises of team of specialists in every functional area of real estate arena having valuable/rich experience in property development, building word class facilities, apartments, townships and other spaces in prime locations, by following international standards and latest technology of the field.

Our aim and motto is to turn the dream of having a decent suitable home into reality including he entire and ultimate satisfaction of our esteemed clients/customers by providing world class facilities, atmosphere, infrastructure and architectural excellence at affordable prices by adopting modern technology, equipments, best man power within the stipulated time frame.



SITE PLAN



1 BEDROOM (TYPE - 1)



SALEABLE AREA
570sq. ft.



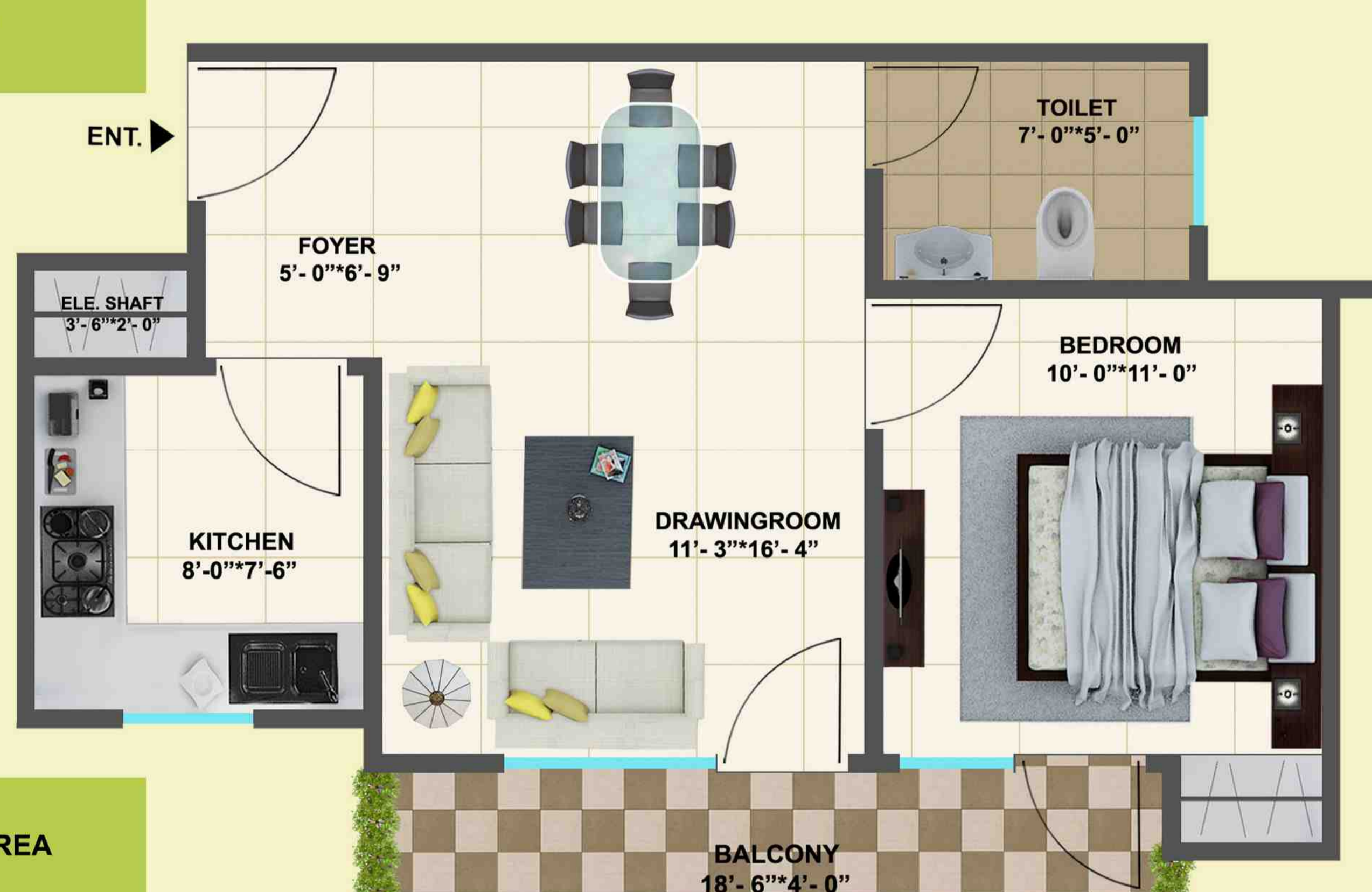
1 BEDROOM (TYPE - 2)



SALEABLE AREA
600sq. ft.



1 BEDROOM (TYPE - 3)



SALEABLE AREA
625sq. ft.



1 BEDROOM (TYPE - 4)



SALEABLE AREA
480sq. ft.



1 BEDROOM (TYPE - 5)



SALEABLE AREA
400sq. ft.



2 BEDROOM (TYPE - 6)



SALEABLE AREA
870sq. ft.



2 BEDROOM (TYPE - 7)



SALEABLE AREA
840sq. ft.



BHIWADI

BHIWADI-TAPOOKARA-KHUSHKHERA (BTK) Complex is a fast developing industrial township located at the North-eastern boundary of Rajasthan in North-Eastern part of **Alwar Distt.** Bhiwadi is situated at a distance of 5 km from **Dharuhera** on NH-8.

As per the State Government Industrial Policy, more of small scale Industries are being promoted in the State. **Bhiwadi, Khushkhhera and Chaupanki Industrial Areas in BTK Complex** have more concentration of major industries of auto parts, cycle components, service station & allied items, casting and forgings, ceramics, crockery moulding, powder, cement product, marble product & allied items, chemicals, cosmetics & allied items, drugs, pharmaceuticals, surgical, medical instruments, insecticides, fertilizers etc. Electrical & electronic component cables, battery & allied items, food products, poultry & catstels feeds, minerals water, soft drinks etc. General engineering, bearing, dye, fabrication etc. Glass, wood papers & allied items, iron & steel, non-ferrous metal, aluminum bathroom fitting, packaging, paint & printing ink, plastic, printing press, stationery items. Rubber, leather & foam products, textile, yarn, readymade garment etc. Miscellaneous and unclassified Industries path red industrial area has three major zones, one for Auto and Engineering second for cable sector and third for Garment Sector some of the Major industries in these sectors of manufacturing are Sata Krishna Tyres (Auto Parts) M/s Federal Moghul (Spark Plug), Shree Ram Cables Pvt. Ltd. Cables, Relaxed foot wares, Orient Syntax Ltd. (Textiles), Pararampuria Synthetics (Synthetic yarn) HONDA Plants, Honda Motor cycle & scooter India Ltd., Honda Srel Car India Pvt. Ltd. Honda Logistics, United Breweries Ltd, M/s Lafarge Boaral Gypsum (I) Pvt. Ltd., **Khushkhhera**, M/s Jaquar Sri Co. Ltd., Bhiwadi, Shree Cement **Khushkhhera**. Total Number of Employees currently working in Industrial areas is 70,050. there are about ten individual industries, covering an area of 700 acres, outside RIICO Industrial areas in **BHIWADI-TAPOOKARA-KHUSHKHERA (BTK) Complex**.

Electricity is an important Infrastructure for any planned city, further due to the presence of extensive industrial estates makes electricity crucial component. Jaipur Vidyut Nigam Ltd. (JVNL) is agency laying the Electricity network and distributing Electric in **BHIWADI-TAPOOKARA-KHUSHKHERA (BTK) Complex**. **RIICO** being responsible for Providing Infrastructure to Industrial Estates Provides land for Construction of electric substation in Industrial Areas. Fire station is one of the facilities which are vital to any area to save it timely from fire hazards and other unforeseen emergencies.

Socio - Cultural Facilities include multipurpose community halls, banquet halls, recreational club, exhibition and fair around. Bhiwadi has recreational club namely tree house with world class facilities for community gathering.

A livable Greater **Bhiwadi** with a vibrant manufacture and service sector economy as Regional center of NCR Supported by matching world class infrastructure with specific consideration for existing abadi areas with Provisions of basic Physical and social infrastructure.



KEY FACTS

• Dharuhera -	8Km
• IMT Manesar -	25Km
• Gurgaon -	45Km
• Alwar By Pass -	7Km
• Airport -	55Km
• Faridabad -	60Km
• Alwar -	90Km
• Shajapur -	42Km



BASIC SPECIFICATION

GENERAL WALLS FINISH	Internal External	Earth Quake Resistant. Paint in Pastel Shades of oil bound distemper. Exclusive Finish texture Paint with Weather Proof Coating
FLOORING	Drawing/Dining Bedrooms Master Bedroom Balconies Staircase	Anti-skid tiles or Vitrified tiles. Anti-skid tiles or Vitrified tiles. Laminated wooden flooring. Ceramic tiles or Anti-skid tiles. Indian Marbles or Granite
TOILET	Walls Flooring Fittings	Ceramic tiles up to 7 Feet height in pleasing colors. Anti-skid tiles or Ceramic tiles. Provision for Hot & cold water supply (without geyser) and wall mirror shall be provided.
KITCHEN	Walls Flooring Fitting	2 feet ceramic tiles Ceramic tiles/Anti Skid tiles. Provision for Hot & Cold Water Supply (without geyser).
WINDOW		Aluminium Powder Coated
DOORS	Internal Doors	Hardwood door frames with new style Flush panel/Moulded Skin Doors
ELECTRICAL	Fitting	Copper wiring in concealed PVC conduits. Modular & Switching/Dining.
WATER SUPPLY		24hrs water supply.
POWER BACK UP		10hrs Power back up for common areas and apartments.
LIFT LOBBY		Decorative Marble/Granite flooring or equivalent flooring.



LOCATION MAP

